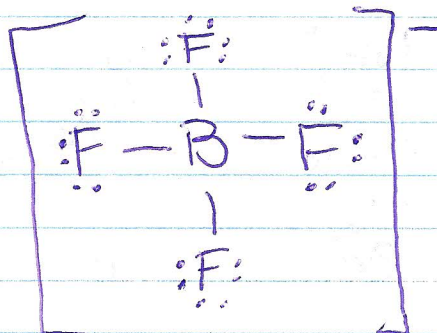
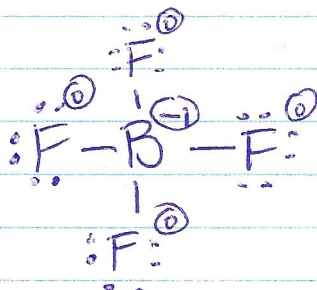
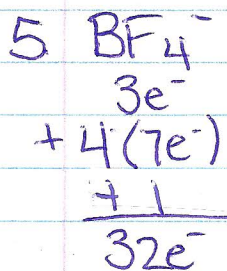
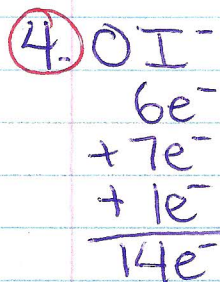
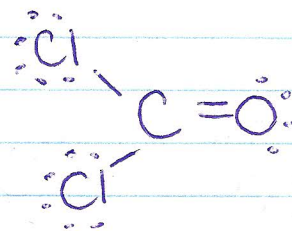
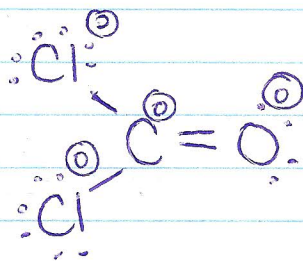
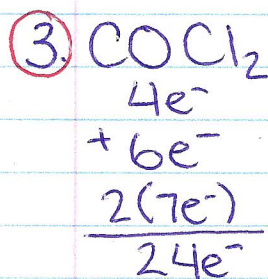
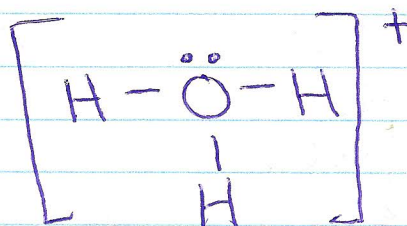
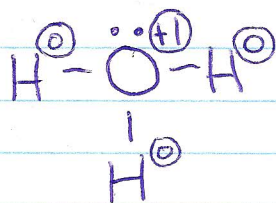
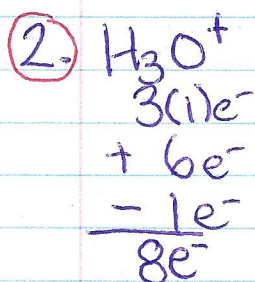
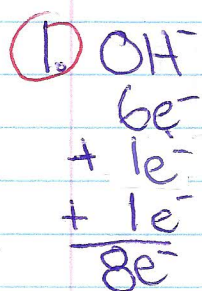
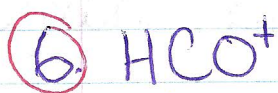
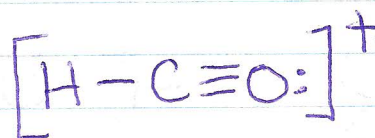


Drawing Lewis Dot Structures with Charges

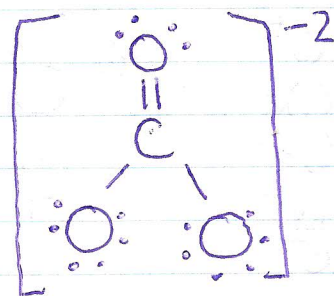
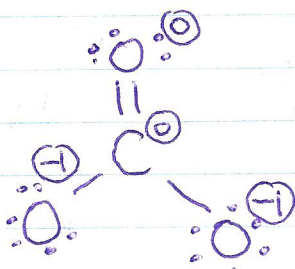




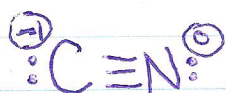
$$\begin{array}{r} 1e^- \\ + 4e^- \\ + 6e^- \\ - 1e^- \\ \hline 10e^- \end{array}$$



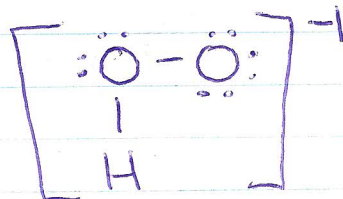
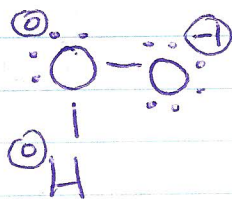
$$\begin{array}{r} 4e^- \\ + 3(6e^-) \\ + 2e^- \\ \hline 24e^- \end{array}$$



$$\begin{array}{r} 4e^- \\ + 5e^- \\ + 1e^- \\ \hline 10e^- \end{array}$$



$$\begin{array}{r} 1e^- \\ + (2)(6e^-) \\ + 1e^- \\ \hline 14e^- \end{array}$$



$$\begin{array}{r} 5e^- \\ + 4(1e^-) \\ - 1e^- \\ \hline 8e^- \end{array}$$

